



106.50.03.475

46.88 70.36
50.36 50

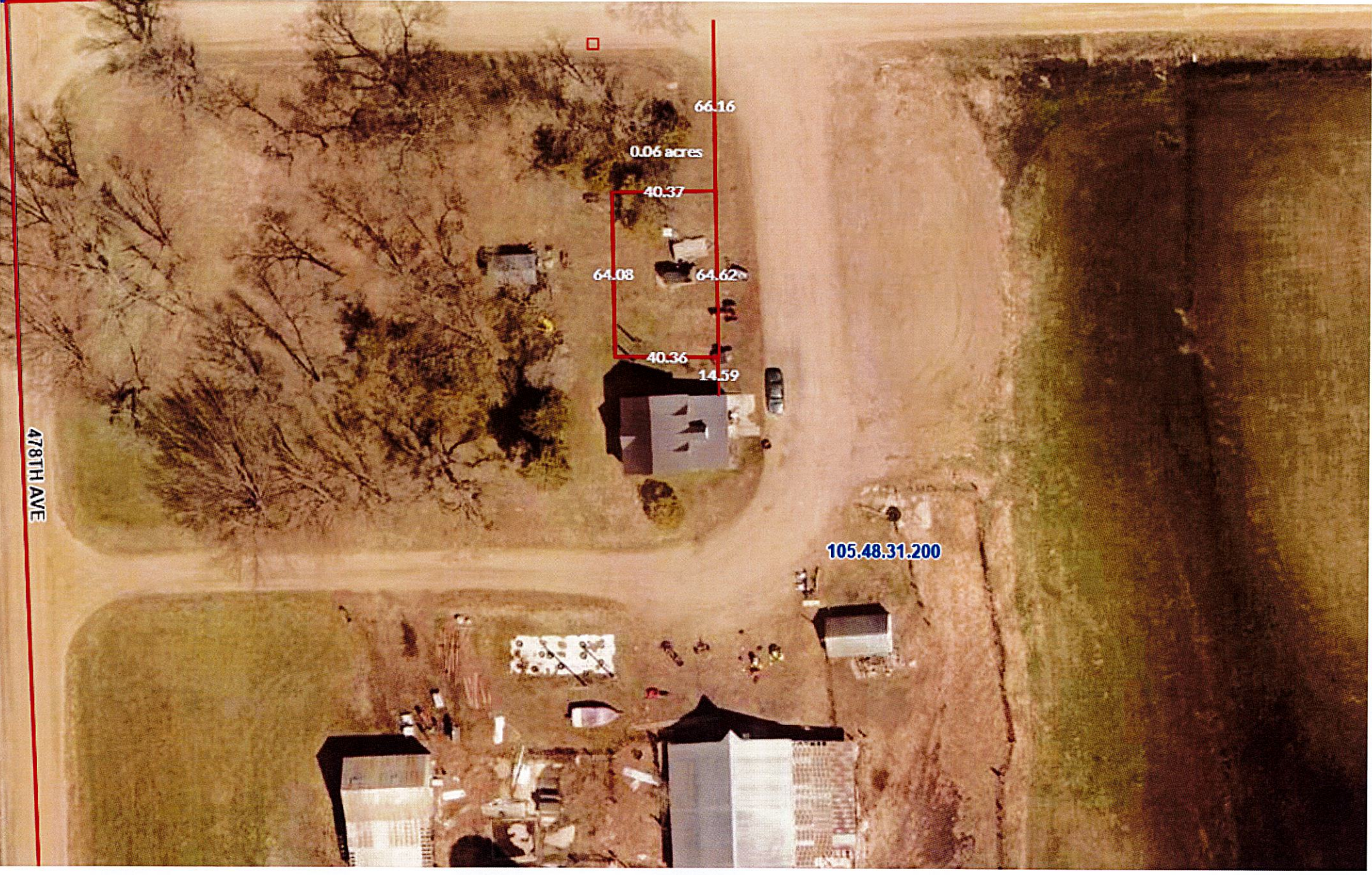
106.5

478TH AVE



0.06 acres

105.48.31.200



DEPARTMENT	FUND	VENDOR NAME	DATE	DESCRIPTION	AMOUNT
NON-DEPARTMENTAL	GENERAL FUND	MISCELLANEOUS V	4/21/26	DANIELLE TORGERSON: CAA RE	412.40
				TOTAL:	412.40
COMMISSIONERS	GENERAL FUND	INFOTECH SOLUTIONS, LLC.	4/21/26	COMM- DATA PROCESSING	3,774.00
		MIDAMERICAN ENERGY	4/21/26	COMM- NATURAL GAS TAX PROP	61.93
				TOTAL:	3,835.93
COURT SYSTEM	GENERAL FUND	SENTENCING ADVOCACY GROUP OF EVANSTON SUZERAIN	4/21/26	CT SYSTEM- EXPERT WITNESS	30,510.98
			4/21/26	CT SYSTEM- EXPERT WITNESS	10,000.00
				TOTAL:	40,510.98
STATES ATTORNEY	GENERAL FUND	A & B BUSINESS INC. SOLUTIONS	4/21/26	ST ATRY- MC14 TOSHIBA	59.43
			4/21/26	ST ATRY- MC14 TOSHIBA	59.43
		BRUNING & LEWIS LAW FIRM, PLLC	4/21/26	ST ATRY- 2ND HALF APRIL 20	4,248.12
				TOTAL:	4,366.98
COURT APPOINTED ATTORN	GENERAL FUND	OLIVIER MILES HOLTZ, LLP	4/21/26	CT APT ATRY- JH	7,762.94
				TOTAL:	7,762.94
GENERAL GOVT BUILDING	GENERAL FUND	ACCESS ELEVATOR & LIFTS INC	4/21/26	CT HOUSE- ANNUAL MAINTENAN	680.00
		EKERN HOME EQUIPMENT	4/21/26	CT HOUSE- IMPROVEMENTS	161.25
			4/21/26	CT HOUSE- IMPROVEMENTS	112.50
			4/21/26	CT HOUSE- IMPROVEMENTS	273.75
			4/21/26	CT HOUSE- IMPROVEMENTS	825.64
		HILLYARD/SIOUX FALLS	4/21/26	CT HOUSE- SUPPLIES	391.54
			4/21/26	CT HOUSE- SUPPLIES	134.04
			4/21/26	CT HOUSE- SUPPLIES	149.76
		MAYNARDS	4/21/26	CT HOUSE- SUPPLIES	53.41
		MIDAMERICAN ENERGY	4/21/26	CT HOUSE- NATURAL GAS	971.84
		TRANE U.S. INC.	4/21/26	CT HOUSE- SRVC AGREEMENT	4,900.00
				TOTAL:	8,653.73
DIRECTOR OF EQUALIZATI	GENERAL FUND	MCLEOD'S PRINTING	4/21/26	DOE- SUPPLIES	55.00
				TOTAL:	55.00
REGISTER OF DEEDS	GENERAL FUND	A & B BUSINESS INC. SOLUTIONS	4/21/26	ROD- MC32 TOSHIBA	56.05
			4/21/26	ROD- MC32 RICOH	33.07
				TOTAL:	89.12
VETERANS SERVICE OFFIC	GENERAL FUND	A & B BUSINESS INC. SOLUTIONS	4/21/26	VSO- MC126 RICOH	50.73
				TOTAL:	50.73
SHERIFF	GENERAL FUND	CENTURYLINK	4/21/26	SHERIFF- UTILITIES	662.44
		CROSSROADS TRUCKSTOP	4/21/26	SHERIFF- GAS 030326277	47.60
			4/21/26	SHERIFF- GAS 040326277	39.13
			4/21/26	SHERIFF- GAS 070326277	37.00
		HILLYARD/SIOUX FALLS	4/21/26	SHERIFF- SUPPLIES	412.08
		MIDAMERICAN ENERGY	4/21/26	SHERIFF- NATURAL GAS	357.18
		RIVER'S EDGE COOPERATIVE	4/21/26	SHERIFF- GAS	2,463.47
		STEVE'S TIRE & SERVICE INC	4/21/26	SHERIFF- SUPPLIES	34.05-
			4/21/26	SHERIFF- SUPPLIES	183.69
		MORGAN REIN	4/21/26	SHERIFF- GAS REIMBURSEMENT	63.88
		MOODY COUNTY TREASURER	4/21/26	SHERIFF- NEW VEHICLE PLT T	17.00
				TOTAL:	4,249.42
JAIL	GENERAL FUND	AXIS FORENSIC TOXICOLOGY, INC	4/21/26	JAIL- BLOOD ALCOHOL	260.00

DEPARTMENT	FUND	VENDOR NAME	DATE	DESCRIPTION	AMOUNT
			4/21/26	JAIL- BLOOD ALCOHOL	260.00
		BROOKINGS COUNTY SHERIFF'S OFFICE	4/21/26	JAIL- BLOOD ALCOHOL	260.00
			4/21/26	JAIL- HOUSING MARCH 2026	5,040.00
		LAKE COUNTY SHERIFF	4/21/26	JAIL- MEDICAL	16.09
		MINNEHAHA COUNTY JAIL	4/21/26	JAIL- HOUSING MARCH 2026	3,040.00
		MINNEHAHA COUNTY REGIONAL JUVENILE	4/21/26	JAIL- HOUSING FEB 2026	1,319.00
			4/21/26	JAIL- JUVENILE HOUSING RR	308.00
				TOTAL:	10,503.09
POOR RELEIF	GENERAL FUND	DAKOTABILITIES	4/21/26	POOR RELIEF- 2ND QT 2026	900.00
				TOTAL:	900.00
AMBULANCE	GENERAL FUND	LEXIPOL, LLC	4/21/26	AMB- LEARNING PLATFORM 202	992.16
				TOTAL:	992.16
DOMESTIC ABUSE	GENERAL FUND	WHOLENESS CENTER	4/21/26	DOM ABUSE- 2026 APPROPRIAT	3,000.00
				TOTAL:	3,000.00
MENTALLY ILL	GENERAL FUND	LEWIS & CLARK BEHAVIORAL HEALTH SERVIC	4/21/26	MENTAL ILLNESS- BMI HEARIN	225.00
		LINCOLN COUNTY TREASURER	4/21/26	MENTAL ILLNESS- SERVICE	541.66
		STATE TREASURER	4/21/26	MENTAL ILLNESS- SD HSC	1,152.44
				TOTAL:	1,919.10
MENTAL ILLNESS BOARD	GENERAL FUND	LINCOLN COUNTY TREASURER	4/21/26	MENTAL ILLNESS- BOARD	625.80
		DEAN SCHAEFER COURT REPORTING	4/21/26	MENTAL ILLNESS- BOARD CT R	66.00
		YANKTON COUNTY TREASURER	4/21/26	MENTAL ILLNESS- BOARD RA	165.95
				TOTAL:	857.75
PUBLIC LIBRARY	GENERAL FUND	CARA WEGNER	4/21/26	LIB- SUPPLY REIMBURSEMENT	15.81
				TOTAL:	15.81
SENIOR CITIZENS	GENERAL FUND	INTER-LAKES COMMUNITY ACTION INC	4/21/26	SR CITIZEN- APRIL 2026	1,187.17
				TOTAL:	1,187.17
EXTENSION	GENERAL FUND	CENTURY BUSINESS PRODUCTS	4/21/26	EXT- KYOCERA	40.85
		MAYNARDS	4/21/26	EXT- SUPPLIES	49.22
		MIDAMERICAN ENERGY	4/21/26	EXT- NATURAL GAS	358.83
				TOTAL:	448.90
WEED CONTROL	GENERAL FUND	KRULLS GARAGE	4/21/26	WEED- LAWN MOWER TIRE REPA	30.00
				TOTAL:	30.00
HIGHWAY & BRIDGE	HIGHWAY & BRIDGE F	A-1 PORTABLE TOILETS	4/21/26	HWY- PORTABLE TOILET RENTA	225.00
		CITY OF COLMAN	4/21/26	HWY- UTILITIES	164.41
		KNIFE RIVER	4/21/26	HWY- COLD MIX	2,243.59
		EQUIPMENT BLADES, INC	4/21/26	HWY- SUPPLIES	1,692.10
		FLEETPRIDE INC	4/21/26	HWY- REPAIRS	350.92
			4/21/26	HWY- REPAIRS	49.18
			4/21/26	HWY- REPAIRS	197.84
		GRAHAM TIRE S.F NORTH	4/21/26	HWY- REPAIRS	232.66
			4/21/26	HWY- REPAIRS	4,882.20
		KIMBALL MIDWEST	4/21/26	HWY- SUPPLIES	181.86
		MAYNARDS	4/21/26	HWY- SUPPLIES	38.32
		MIDAMERICAN ENERGY	4/21/26	HWY- NATURAL GAS	600.01
		NAPA AUTO PARTS	4/21/26	HWY- REPAIRS	15.22
			4/21/26	HWY- REPAIRS	10.64

DEPARTMENT	FUND	VENDOR NAME	DATE	DESCRIPTION	AMOUNT
		RIVER'S EDGE COOPERATIVE	4/21/26	HWY- REPAIRS	942.80
		RDO EQUIPMENT CO	4/21/26	HWY- GAS	1,009.50
		SD DEPT OF TRANSPORTATION	4/21/26	HWY- REPAIRS	1,466.02
			4/21/26	HWY- RD & BRIDGE	2,516.14
			4/21/26	HWY- RD & BRIDGE	1,470.32
			4/21/26	HWY- 2025 BRIDGE INSPECTIO	160.59
				TOTAL:	18,449.32
TOWNSHIP FIRE	MOODY COUNTY FIRE	COLMAN FIRE DEPARTMENT	4/21/26	FIRE- 2026 1ST QT	6,477.17
		FLANDREAU FIRE DEPT.	4/21/26	FIRE- 2026 1ST QT	7,429.70
		TRENT FIRE DEPARTMENT	4/21/26	FIRE- 2026 1ST QT	5,143.64
				TOTAL:	19,050.51
EMERGENCY MANAGEMENT	EMERGENCY MANAGEME	NAPA AUTO PARTS	4/21/26	EM MGMT- BATTERY/CORE	130.13
				TOTAL:	130.13
JAIL	24/7 SOBRIETY FUND	PHARMCHEM, INC.	4/21/26	24/7- PATCH ANALYSIS	18.00
				TOTAL:	18.00
OTHER FINANCES	STATE REMITTANCE C	STATE TREASURER	4/21/26	ST REMIT- MOTOR VEHICLE	180,201.24
				TOTAL:	180,201.24
LAW LIBRARY	LAW LIBRARY FUND	LOOPUP LLC.	4/21/26	LAW LIB- MARCH 2026	26.62
				TOTAL:	26.62
NON-DEPARTMENTAL	STATE 24/7 FUND	SD ATTORNEY GENERAL'S OFFICE	4/21/26	24/7- PBT	72.00
			4/21/26	24/7- REMOTE BREATH	124.00
				TOTAL:	196.00
NON-DEPARTMENTAL	MODERN & PRES FLOW	SD ASSOCIATION OF COUNTY OFFICIALS	4/21/26	MOD & PRESS- MARCH 2026	254.00
				TOTAL:	254.00

===== FUND TOTALS =====

101	GENERAL FUND	89,841.21
201	HIGHWAY & BRIDGE FUND	18,449.32
211	MOODY COUNTY FIRE FUND	19,050.51
226	EMERGENCY MANAGEMENT	130.13
248	24/7 SOBRIETY FUND	18.00
742	STATE REMITTANCE CTR FD	180,201.24
766	LAW LIBRARY FUND	26.62
768	STATE 24/7 FUND	196.00
769	MODERN & PRES FLOW FUND	254.00

	GRAND TOTAL:	308,167.03
