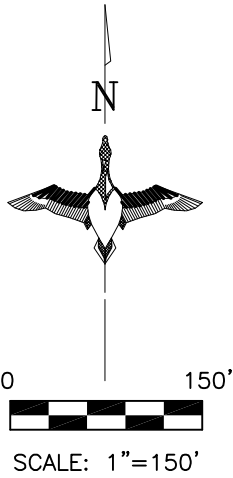
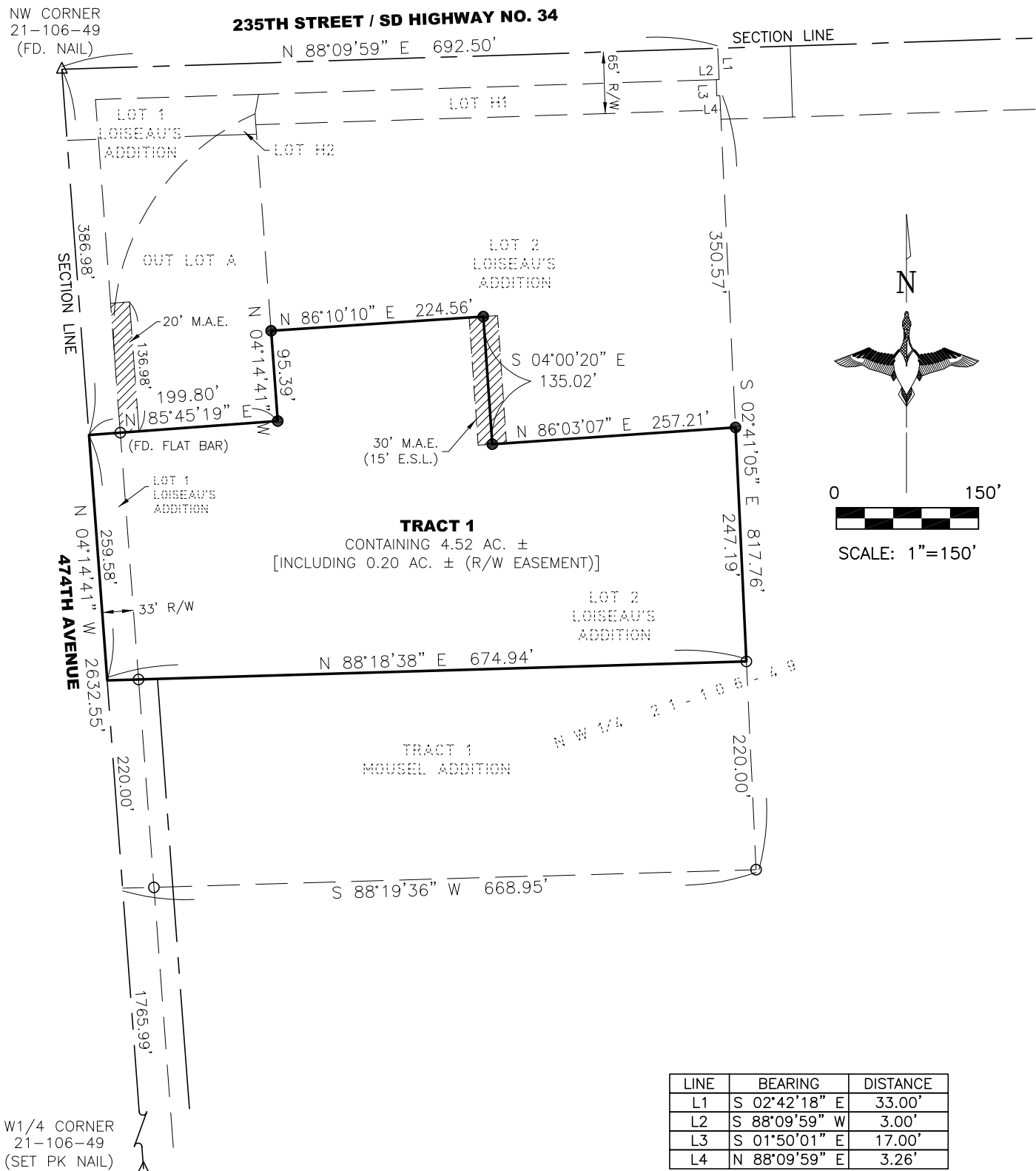


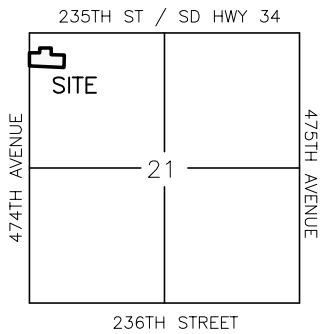
PLAT OF TRACT 1 OF WITTE ADDITION

IN THE NORTHWEST QUARTER OF SECTION 21, TOWNSHIP 106 NORTH, RANGE 49 WEST OF THE 5TH PRINCIPAL MERIDIAN, MOODY COUNTY, SOUTH DAKOTA.



LEGEND:

- SET 5/8" REBAR W/CAP #10141
- FD. #10141 (UNLESS NOTED OTHERWISE)
- △ SECTION CORNER (AS NOTED)
- (R) RECORD INFORMATION
- AC. ACRES
- E.S.L. EACH SIDE OF PROPERTY LINE
- M.A.E. MUTUAL ACCESS EASEMENT
- R/W RIGHT-OF-WAY
- N.T.S. NOT TO SCALE
- FD. FOUND
- RIGHT OF WAY LINE
- - - PREVIOUSLY PLATTED



AREA MAP N.T.S.
SECTION 21, T106N, R49W
5TH P.M.



NOTES:
BASIS OF BEARINGS IS SD STATE PLANE SOUTH

THIS PLAT WAS PREPARED WITHOUT THE BENEFIT OF A TITLE COMMITMENT.

EASEMENTS OF RECORD WERE NOT RESEARCHED AND ARE NOT SHOWN ON THE PLAT.



211 E. 14th street, Sioux Falls, SD 57104 | Phone: (605) 339-8901